



LOCAL 005

**Natural Resources
Conservation Services**

**Alberta Union
of Provincial
Employees**

**WELCOME TO
YOUR UNION**

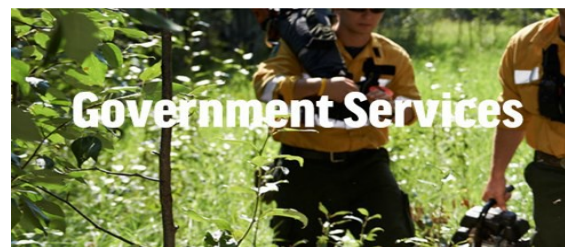
Local 005 Media:

Websites: aupe.org/locals/005
aupelocal5.ca

Facebook Group:
AUPE Local 005 Natural
Resources and Conservation
Services

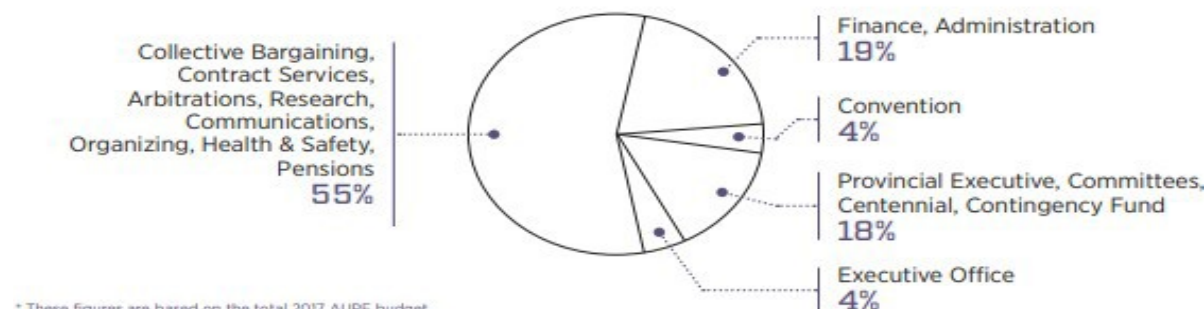
Your Local 005 Executives 2025-2027

Chair – Chris Joly
Vice Chair – Colton Barrett
Secretary – Quinn Archibald
Treasurer – Crystal Ionson
Prov. Exec. Rep – Colton Barrett
Bargaining Lead – Jeff Bleach
OHS Liaison – Vincent De Boer
Chief Steward – Chris Joly



UNION DUES: Did you know AUPE members pay the lowest Dues in Canada for a major Union? Only 1.50% of regular pay and doesn't include overtime hours. Here's a breakdown:

YOUR DUES AT WORK*



* These figures are based on the total 2017 AUPE budget.

ALBERTA UNION OF PROVINCIAL EMPLOYEES MISSION STATEMENT

**To represent and support
AUPE members through
solidarity and mobilization.**

We are on [Facebook](#) under AUPE Local 005 Natural Resources Conservation Services. Here you can find the Collective Agreement, Local 005's Subsidiary Agreement, get updates and have the ability to ask any questions.

WELCOME TO YOUR UNION

A union is a group of working people who have joined together to deal collectively with employers about issues such as wages, benefits and conditions of work.

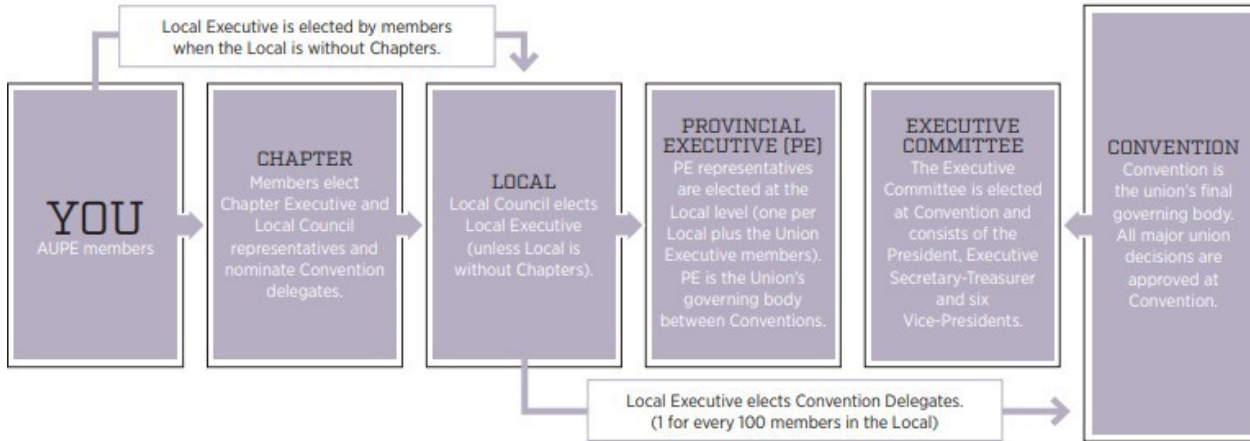
You are now a part of an exciting and growing organization dedicated to standing up for the rights and interests of working people and the services Albertans depend on.

Your working people

You will find AUPE members at work every day in every corner of this province providing a vast range of services to Albertans.

AUPE's 103,200 members work hard in all areas of the public, not-for-profit sectors and many areas of the private sector. Whether it be in direct front-line government services, nursing and support staff in health care, support and technical staff in post-secondary institutions and schools, or a wide range of positions in boards, agencies, and municipalities, AUPE members keep our great province running every single day.

HOW YOU ELECT YOUR UNION REPRESENTATIVES



Government Services: Approximately 20,800 of AUPE members are direct employees of the Government of Alberta.

Health Care Sector: Approximately 68,400 members are employed by Alberta Health Services, as continuing care employers in the public, private, and not-for-profit health care providers. This includes auxiliary nursing care employees and the general support services employees.

Education Sector: Approximately 10,800 members who work as non-academic roles at fifteen post-secondary institutions, Alberta universities, and school districts.

Boards, Agencies, and Local Government: Approximately 3,200 members are employed by boards, agencies, and commissions. Employees work for a variety of mostly public sector employers like municipal governments.

Member Resource Number
1-800-232-7284
Mon-Friday 8:30-4:30

Where we fit within the Union

- Forestry & Lands
- Resource Management
- Conservation Enforcement
- Environment and Parks
- Fish and Wildlife

Local 005 is made up of over 1200 employees from the Alberta Government working in the Natural Resources and Conservation field.

Membership in the Union

What is a Grey Card?

A Grey Card is your membership card with your member number. This number doesn't expire and will remain the same even if you are a seasonal worker. If you do not have a card you can go to [AUPE.org](https://www.aupe.org/) and click on the banner to sign up or call the Member Resource Number.

Your voice at work

AUPE is a strong and vibrant organization that stands up for its members.

When your safety and rights at work are threatened, AUPE will be there, protecting and representing you on your worksite.

When it comes time to bargain a collective agreement with your employer, AUPE will be there, helping you get fair compensation and benefits.

Membership Discounts

Show your AUPE Membership card and take advantage of hundreds of member discounts! For a complete list of discounts such as insurance, travel, fitness, go to:

<https://www.aupe.org/member-resources/discounts>

Strength in numbers

AUPE's strength and success is due to its large and active membership, working alongside dedicated leaders, activists, union stewards and AUPE's professional staff.

You will have many opportunities to get involved with your union as much as you want to, whether it is at your worksite, your chapter or local, or through union education programs.

The support and involvement of members like you is what makes AUPE the strong, democratic organization it is today. Our strength in numbers has enabled AUPE to be a powerful voice on issues that matter to working people. This is AUPE. Welcome to your union.

We look forward to working with you!

AREA COUNCILS

THE FUN SIDE OF AUPE

Membership in AUPE benefits our families and communities in more ways than one. Area Councils are set up geographically to organize family-oriented union social event throughout the year.

Throughout the province, Area Councils organize events such as curling bonspiels, Christmas parties and picnics, and provide access to discounted products and services such as movie tickets for members.



STANDING COMMITTEES

AUPE has 13 standing committees which deal with concerns and interests of AUPE members. Any member can apply to be on committee for a 2-year term.

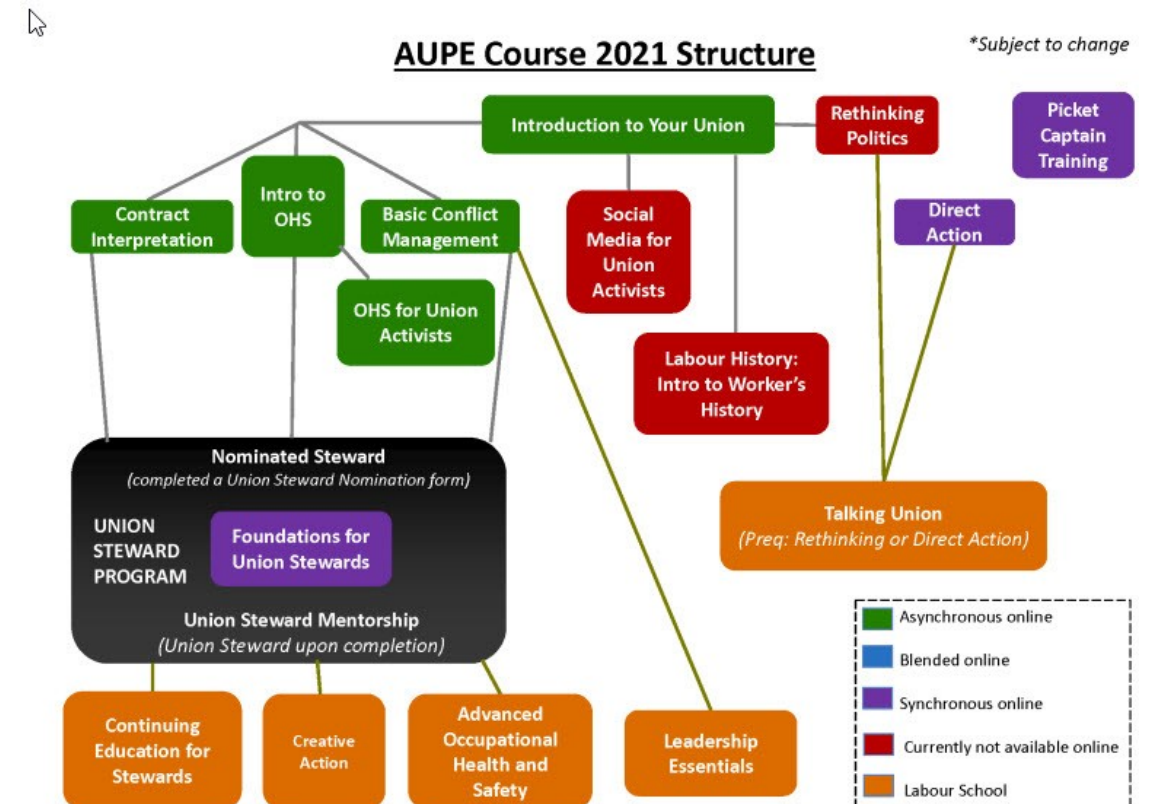
Anti-Privatization
Environmental
Executive
Finance
Human Rights
Legislative
Member's Benefits
Membership Services
Occupational Health and Safety
Pay and Social Equality
Pension
Committee on Political Action
Women's
Young Activists

TRAINING

Knowledge is power! Labour education at AUPE supports you in taking a stand for public services, decent jobs and fairness in the workplace and our communities. AUPE's Education Program is responsible for developing and delivering continuing education courses and workshops to members and officers in support of the roles they perform in their Union.

We highly recommend taking the online "[Introduction to your Union](#)".

To sign up for training click on the training tab at AUPE.org and create a learning account. Time off for Union training is paid for by AUPE.



How does AUPE work for you?

Contract negotiations AUPE has bargained some of the best contracts in the province. Regular wage increases, hours of work, overtime pay, statutory holidays, sick leave, health benefits, layoff, recall rules and many other benefits were won through the negotiations process.

As an AUPE member, you will help decide the bargaining goals and priorities, participate in and support the negotiation process and vote on your collective agreement.

Bursaries & Scholarships

Every year, AUPE distributes thousands of dollars in scholarships and bursaries to members, their families, and other students at various post-secondary institutions in Alberta.

Did you know?

Some courses taken through AUPE training can be applied towards University Transfer credits.



Labour Relations

Union Stewards and other union representatives help members understand their collective agreements and defend against unfair discipline, dismissal or other contract violations. Members also have access to union staff with the legal and technical expertise to assist with a wide range of issues including health and safety concerns, disability accommodations, return to work plans and Workers' Compensation matters.



Make the most of your AUPE membership by staying informed and engaged!

The following checklist will help guide members in finding the resources available to them and questions they may have. Additional information can be found throughout this brochure or contact the AUPE Member Resource Centre at 1-800-232-7284.

AUPE CHECKLIST

- ◇ Completed and mailed or submitted my Grey Card through the AUPE Website.
- ◇ Create a MyAUPE account on the AUPE website www.aupe.org
- ◇ Saved the Member Resource Centre number in my phone contacts.
- ◇ Know the name and contact information of my Union Steward and other worksite contacts.
- ◇ Received my member card and know my member number.
- ◇ Visited www.aupe.org and reviewed my collective agreement.
- ◇ Liked and followed [your AUPE](#) on Facebook.
- ◇ Followed AUPE on Twitter (@_AUPE_).
- ◇ Know my local and chapter and how to contact them.
- ◇ Visited the website of my local.
- ◇ Registered for the "Introduction to My Union" course.